



## 2012 Steel Block Bandits Rulebook

[www.steelblockbandits.com](http://www.steelblockbandits.com)

**Steel Block Bandits  
107 Woodys Pl  
Winchester, VA 22602**

*Copyright 2012 - 115 Promotions LLC.*

***115 Promotions LLC. is the STEEL BLOCK BANDITS!!!***

*2012 General Rules, Guidelines  
and Specifications*

0 Definition of Terms  
2.0 Membership  
3.0 Personal Safety Equipment  
4.0 Licenses  
5.0 Racing Event Procedures  
6.0 Scoring Procedures  
7.0 Payoff and Pit Procedures  
8.0 Provisional and Alternate Starting Positions  
9.0 Racing Programs Special Event Shows  
10.0 Points Breakdown  
11.0 Penalties, Fine Schedules and Protests  
12.0 Steel Block Bandits Late Model Rules  
13.0 Rule Interpretations and Additions  
14.0 Rainouts  
15.0 Drawings  
16.0 Tire Chart



## **2012 Steel Block Bandits Late Model Series Rulebook**

### **PREFACE**

A Steel Block Bandits event is a competitive Late Model racing event which is intended to be conducted and officiated in accordance with the rules herein (the 2012 Steel Block Bandits Late Model Rule Book). These rules provide the guideline for all events. The rule book may be amended from time-to-time and special rules may be published and/or adjusted at any particular event with the participants receiving prior notification. By participating in these events, all participants agree to comply with these rules and regulations. The rules are not intended to express or imply the warranty of safety as a result of publication of, or compliance with the rules and regulations as stated herein. The rules are intended to offer a guideline for the conduct and officiating of an event.

The Series Director shall be empowered to permit any reasonable and/or appropriate amendment from any of the specifications and/or procedures herein, or impose any further restriction that in their opinion does not alter minimum acceptable requirements. Revisions to the rules are not intended to express or imply the warranty of safety shall not result from any such deviation or restriction of the specifications, rules and/or procedures. Any interpretation of, deviation from, these rules herein, are left to the discretion of the racing officials and their jurisdiction is final.

Any visible equipment changes and/or performance enhancing changes to previously approved Steel Block Bandits Late Models and/or equipment must be approved in writing prior to introduction into competition by the Steel Block Bandits Late Model officials. Steel Block Bandits Officials reserve the right to immediately determine the legality and use of any equipment that has not received prior written approval for introduction into competition.

It is ultimately the obligation of each participant to ensure their conduct and equipment complies with all of the applicable rules, as they may be amended from time-to-time. The rules are in no way a guarantee against injury and/or death to participants, spectators, officials and/or others.

## **1.0 Definition of Terms**

The following terms, which appear periodically throughout this Rule Book, have the following meanings:

**A.)** “Steel Block Bandits” – The trade name and registered mark of the Steel Block Bandits.

**B.)** “Steel Block Bandits Late Model Series Rule Book” – The rules in this Rule Book, as they may be amended from time-to-time as provided in Sub-Section 1.1.

**C.)** “Steel Block Bandits Late Model Officials” – Persons employed by The 115 Promotions, LLC and appointed by 115 Promotions, LLC to officiate as an employee or independent contractor at an event.

**D.)** “Event” – A Steel Block Bandits sanctioned event. The event includes the race and all ancillary activity leading up to and following the conclusion of the event, including registration/sign-in, inspection (pre and post-race), practice, time trials and/or qualifying and/or participant meetings and it includes events affected by inclement weather and/or postponed dates related thereto.

**E.)** “Promoter” – The individual, partnership, corporation, joint venture and/or other legal entity that, in connection with the Event, is designated as the “Promoter” in the executed Sanction Agreement for the Event.

**F.)** “Competitor” – A driver, car owner, crew member and/or any other person who participates competitively in a Steel Block Bandits sanctioned racing event. Whenever the words Competitor, driver, car owner, mechanic, team member and/or crew member are used unless the context indicates otherwise, the term used shall be interpreted to include any driver, car owner, crew member and/or other person assigned to or a member of the same racing team.

**G.)** “OEM” – Original Equipment Manufacturer.

**H.)** “Late Model” – A specified racing vehicle that fits the specifications set forth in this Rule Book.

### **1.1 - Steel Block Bandit - Rules**

**A.)** Effective Date – The Rules are effective January 1, 2012 for any division and/or event, regardless of when a Competitor receives actual notice. “Date of Publication” of the Rules or any amendments thereto is the earliest of distribution from 115 Promotions, LLC headquarters and/or release to the press.

**B.)** Amendment – The Steel Block Bandits rules may only be amended by publication of an amendment in an issued statement pursuant to the authority of the Steel Block Bandits officials. An amendment is effective upon the date of the publication, regardless when a competitor receives the actual notice.

**C.)** Applicability – 115 Promotions, LLC issues various rule books, each of which includes in its title reference to a particular sanctioned series or type of event. The rules in each Rule Book are applicable to the Series and/or type of Event set in the title of that Rule Book.

**D.) Interpretation and Application** – If there is a disagreement or dispute regarding the meaning or application of the rules, the interpretation and application of the Officials at the event will prevail.

**E.) Finality of Interpretation and Application** – The interpretation and application of the Rules by Officials at the event shall be final and non-appealable.

ALL COMPETITORS AND OFFICIALS, EXPRESSLY AGREE THAT DETERMINATIONS BY 115 Promotions, LLC OFFICIALS AS THE APPLICATION AND INTERPRETATION OF THE RULES ARE NON LITIGABLE, AND THEY COVENANT THAT WILL NOT INITIATE OR MAINTAIN LITIGATION OF ANY KIND AGAINST THE 115 Promotions, LLC OR ANYONE ACTING ON BEHALF OF THE 115 PROMOTIONS, LLC, TO REVERSE OR MODIFY SUCH DETERMINATIONS OR TO RECOVER DAMAGES OR TO SEEK ANY OTHER KIND OF RELIEF AS A RESULT OF SUCH DETERMINATIONS, UNLESS THE OFFICIALS MADE SUCH DETERMINATIONS FOR NO PURPOSE OTHER THAN A BAD FAITH INTENT TO HARM OR CAUSE ECONOMIC GAIN/LOSS TO THE COMPETITOR OR OFFICIAL. IF THE COMPETITOR OR OFFICIAL INITIATES OR MAINTAINS LITIGATION IN VIOLATION OF THE COVENANT, COMPETITOR OR OFFICIAL AGREES TO REIMBURSE 115 Promotions, LLC FOR THE COSTS OF SUCH LITIGATION, INCLUDING ATTORNEY’S FEES. EACH COMPETITOR OR OFFICIAL FURTHER COVENANTS THAT IN ANY LITIGATION BROUGHT AGAINST 115 Promotions, LLC FOR ANY REASON, IF THE LITIGATION IS NOT DISMISSED PURSUANT TO THIS COVENANT THE MATTER WILL BE TRIED BEFORE A JUDGE OF COMPETENT JURISDICTION AND HEREBY WAVES ANY RIGHT TO TRIAL BY JURY IN SUCH ACTION.

**F.) Principal Rule of Interpretation and Application** – The rules are intended to ensure that sanctioned events are conducted in a manner that is as fair as possible for all competitors, consistent with prompt finality in competition results. On occasion, circumstances will be presented that are either unforeseen and/or otherwise extraordinary, in which strict application of the 115 Promotions, LLC rules may not achieve this goal. In such rare circumstances, the Officials, as a practical matter, may make a determination regarding the conduct of an event, the eligibility of a Competitor or similar matters that are not contemplated by or are inconsistent with the 115 Promotions, LLC rules, in order to achieve this goal. From time-to-time in particular rules, Official Entry Blanks, Bulletins and elsewhere, 115 Promotions, LLC may use the term “EIRI” meaning “Except in Rare Instances” to indicate the likelihood that such a determination may be made..

**G.) Special Rules** – Special rules may be made by the 115 Promotions, LLC Officials for an event. Such special rules shall apply to the conduct of the event if they are published or announced prior to or during the event by means of Bulletin, newsletter, telephone, fax and/or pre-race meeting.

## **Section 2 – Eligibility**

### **2.1 Eligibility**

**A.) Eligibility** – Open to Any individual or business entity interested in the Steel Block Bandits Late Model Racing Series, and has agreed to abide by the rules as set by the Steel Block Bandits Late Model Series.

**B.) Competitive Eligibility** – All drivers competing in on-track activity at any event, including but not limited to practice, time trials, qualifying races and/ or the race/feature,

must sign a participant waiver form at the designated registration area prior to any on track participation in any Steel Block Bandits sanction event.

## **2.2 Conduct**

**A.) General** - All competitors agree to act in a professional manner as determined by 115 Promotions, LLC Officials. The professional manner includes, but is not limited to verbal representation, written representation, any representation that may represent the 115 Promotions, LLC, the Steel Block Bandits Late Model Series, the sport of Late Model racing and/or motorsports in general and/or any affiliates.

- a.) All competitors must arrive at Series races in a timely manner so that they may participate in the entirety of the racing event.
- b.) All competitors will not be permitted to compete and/or participate while under the influence of any alcoholic beverages and/or illegal substances.

## **2.3 Series Championship**

**A.) Championship** - The Steel Block Bandits Late Model Series will award Drivers points as based upon their finish in each Series race as set forth in Section 10 of this rulebook. At the end of the series scheduled season, the 115 Promotions, LLC shall announce one Steel Block Bandits Late Model Series Driver's Champion and they will be awarded championship prize money.

**B.) Banquet** – Banquet attendance is mandatory, unless extenuating circumstances present themselves, for the receipt of point fund and/or any bonus post season awards.

## **2.4 Hardship/Medical Exemption**

**A.)** Any Bandit Competitor Driver that has family hardship or is injured in a Steel Block Bandits Late Model Series event and unable to compete as a result, that driver will be granted a hardship/medical exemption. The driver may be required at the discretion of the 115 Promotions, LLC Officials to produce some type documentation.

- a.) In the event of a driver exemption, that driver has a 2-race or one weekend (whichever comes first) grace period.
- b.) The exemption will ensure that the driver will be awarded 70 points, year-end awards and/or the provisional starting positions for the season.
- c.) If you elect to use your hardship points, you must e-mail or call the SBB Series office before 4pm on the day of that racing event. Any notifications after this time, no Hardship Points will be given.
- d.) If a driver competes at another track the same night he/her is requesting a Hardship/Medical Exemption, the series will not honor the Hardship/Medical Exemption points.

## **2.5 Substance Abuse Policy/Explanation**

**A.)** Substance Abuse Policy/Explanation – The Steel Block Bandits Late Model Series will distribute to all participants at the beginning of each calendar year a specified Substance Abuse Policy. Reasonable suspicion will be determined at the discretion of 115 Promotions, LLC Officials.

## **3.0 Personal Safety Equipment**

### **3.1 General**

- A.) Each competitor is solely responsible for the effectiveness and proper installation, per the manufacturer's specifications, of personal safety equipment and determining it to be adequate for competition at every event. Each competitor is expected to investigate and educate themselves for continuing improvement regarding their own personal safety equipment.

### **3.2 Seat Belt/Restraint System**

A.) Each car will be equipped with minimum of an SFI 16.5 or SFI 16.1 approved restraint system, until the date of the belt expiration (three years from the date of manufacturer). Seat belt restraint systems shall be installed and used in accordance with manufacturer's instructions.

B.) Seat belt material should not be permitted to come in contact with any sharp or metal edge, including when the material passes through the seat.

C.) No frayed belts will be allowed.

### **3.3 Protective Clothing**

A.) We recommend that all drivers wear a fire resistant driving uniform meeting minimum of the SFI 3.2A/5 specification and display a valid SFI 3.2A/5 label.

B.) All drivers should wear fire resistant accessories including but not limited to; head sock, under garments, shoes, gloves and socks. Shoes and gloves will be recommended to meet minimum of the SFI 3.3 specifications and display a valid SFI 3.3 label.

### **3.4 Seats**

A.) Aluminum and/or carbon-fiber-type, composite seats with an FIA and/or SFI rating will be permitted. All seats must be mounted to the frame as required by the seat and chassis manufacturer.

B.) All areas surrounding the head should have padding.

C.) A right side head restraint net and/or support are recommended. All head restraint nets should be equipped with quick release mechanisms.

### **3.5 Helmets**

A.) All drivers will be required to wear a full-face helmet with a minimum Snell safety rating of SA 2010 and/or SA 2005 and/or a valid SFI 31.1, SFI 31.2 and/or SFI 31.1 2000 label.

B.) It is strongly recommended that helmets should be fitted with the Eject™ helmet removal system.

C.) Head and Neck restraints are strongly recommended. The head and neck restraint system must be mounted and connected to the helmet per the helmet manufacturer and head and neck manufacturer instructions.

D.) Arm restraints are recommended and must be connected and used as instructed by the manufacturer.

### **3.6 Other RECOMMENDED**

A.) Sharp and/or protruding edges in and around the cockpit will not be permitted.

B.) Windshield screens should be a minimum thickness of 0.090 inch and should be securely fastened to the roll cage.

C.) A clearly marked electrical engine shut off switch within the reach of the driver.

D.) A clearly marked fuel shut off valve within reach of the driver.

E.) Only SFI flame retardant seat, roll bar, knee and steering pads and/or padding should be utilized.

F.) Driveline U-Joint scatter shields are recommended.

G.) All teams should have an easily accessible 2.5 gallon ABC fire extinguisher or its equivalent at the back of the team's transporter.

### **4.0 Competitors Age**

A.) Minimum age of participation in Steel Block Bandits Events is 16. Any drivers that are under 16-years of age and seek to participate in any racing event must be approved in advance. Driver must participate in Youthful Driver approval process. The driver must also be approved for competition by the Steel Block Bandits Late Model Series Director.

### **5.0 Racing Event Procedures**

A.) The rules as stated herein will cover the rules of the racing event. Rules of the racing event may be altered from time-to-time by Steel Block Bandits Late Model Officials. Racing event procedures and/or racing event rules are final and non-appealable.

#### **5.1 Pre-Race Inspection(s)**

A.) All cars entered and present at any Steel Block Bandits Late Model Series event that are intended to compete in the racing event, must pass pre-race inspection prior to any on-track activity. Pre-race inspection may take place in a specified area and/or in the regards of space directly at the team's transporter. Refusal to present vehicle or preventing officials from completing pre-race inspection will result in disqualification from that event and possible penalty and fines.

#### **5.2 Driver's Meeting(s)**

A.) All drivers, in extenuating circumstances a team representative, must attend the driver's meeting. Driver's in violation of not attending the Driver's Meeting could face a fine, loss of driver's points and/or suspension.

**B.)** The number of racecars starting each event and the number of laps for each event may be announced at the driver's meeting.

**C.)** Any changes in the basic event night program due to car count, track conditions and/or any other circumstances may be announced at the driver's meeting.

### **5.3 Inspection Procedures/Legality**

**A.)** Engines, fuel and sound/mufflers may be inspected at any time.

**B.)** Steel Block Bandits Late Model Series Officials may, at their discretion, inspect any car entered for competition in any racing event at any time.

**C.)** Steel Block Bandits Late Model Series Officials may at their discretion, impound a part/component, engine and/or any other components and/or the complete car for competitive analysis.

### **5.4 Restrictions**

**A.)** All work on the racecar, once any race has begun, must be completed in the designated work area unless informed otherwise.

**B.)** Drivers and/or team members will not be permitted to tamper with the track racing surface.

### **5.5 Entry/Pill Draw**

**A.)** An entry fee will be charged by the Steel Block Bandits Late Model Series at each sanctioned event. This entry fee will be posted on our web site for each event.

**B.)** All drivers and/or teams entered in any event must draw for a position in time trial qualifying or heat race qualifying at the designated location. The driver is responsible for their own pill draw. Only one (1) car may be entered per driver in any event. (If the driver pulling the pill pulls more than one pill, they will be required to take the higher number)

**C.)** If a driver and/or team entered and present at the event does not draw, that team will be placed at the end of the qualifying order. In the event that there are no time trials, then the driver and/or team will start at the rear of their specified qualifying race.

**F.)** At most events, the pill draw will close 15 minutes after the drivers meeting has concluded. This will be noted in the drivers meeting.

### **5.6 Hot Laps/Practice**

**A.)** All entered cars will hot lap by the time trial/qualifying order. Example; the first ten (1-10) cars in the time trial/qualifying order will hot lap followed by (11- 20) and so on. The Scoring Transponder must be mounted on the race car prior to hot laps.

**B.)** Track "run in" maybe required.

### **5.7 Qualifying/Time Trials/Heat Races/B-Mains**

**A.)** If for any reason, a driver and car match-up in any race is separated then only the driver is considered qualified.

**B.)** If a car/team switches drivers, for any reason, that car must start at the rear of the next scheduled race in which that car/team has qualified for.

**C.)** **Heat Race Qualifying** will be determined by pill draw.

**D.)** **Time Trial Qualifying** will consist of two consecutive timed laps unless otherwise noted. Changes to the two-lap qualifying procedure will be at the discretion of the Steel Block Bandits Late Model Series Officials. Any type of 'wave-off' is not permitted. Once the car enters the racing surface that is their qualifying attempt. If the car does not post a time or fails to complete a lap and posts 'no time' they will start last in a heat race.

**E.)** Qualifying will take place in the order of the pill draw. If that time period is missed, the late car will take its time trial at the end of the scheduled lineup and receive only one qualifying lap.

**F.)** The cars and/or teams that are late must be in line before the last scheduled car begins its qualifying attempt. Time trials will be closed once all cars that are in line have started their qualifying attempt and have started their time trial.

**G.)** In the event of two or more cars posting the same time in time trials, the tie breaker will be the qualifying order draw.

**H.)** In the event that a qualified car for the feature is unable to take the initial green, the first non-qualified car will be taken as the alternate starter for the feature event. The original qualified car will not receive points for the feature race. If a qualified car takes the initial green flag and then falls out of the race, there will not be an alternate starter added to the race and the original qualified car will receive only last place points for the feature.

**I.)** Once any driver has completed their qualifying attempt by taking the checkered flag, that driver must drive to the technical inspection area to scale the car for the minimum weight requirement. (From time-to-time, some events may require scaling the cars prior to qualifying).

**J.)** In the event of inclement weather or time restraints, it is at the discretion of the Steel Block Bandits Series Director to change to one (1) lap qualifying.

### **Heat Races**

**A.)** All drivers entered in any event will be scheduled to compete in a heat race.

**B.)** The heat race lineups will be determined by the results of time trials or pill draw in a 'heads up' manner.

**C.)** The number of laps in the heat races and amount of cars transferring from the heat race(s) will be announced at the drivers meeting. (8, 10 or 12 laps with a 15 minute time limit.)

**D.)** Top five cars from the heat race(s) must report to the technical inspection area immediately following the completion of their heat race to scale the car for the minimum

weight requirement. In the event that a competitor fails to report to the scale area following the completion of the event, the driver will be immediately disqualified from that qualifying event.

**E.) Time Trialed Events Only - If there is no dash** - There will be a redraw for starting position amongst the top finisher(s) in each qualifying/heat race. The number of drivers that participate in the redraw will be determined by the number of heat race(s) run during any given event night and will be announced at the driver's meeting. (The procedure for the dash will be reviewed in the drivers meeting)

**F.)** Any driver transferring from the heat race(s) to the feature race that does not qualify for the redraw will line up for the feature race based upon the driver's finish in the heat race. Pill draw type events - heat races will not have a redraw. Drivers will go heads up into the B-Mains and A-Main.

**G.)** Any driver that does not transfer from the heat race(s) to the feature race will be assigned to compete in a 'B'-Main and/or consolation event/race(s).

### **'B-Main(s)'**

**A.)** The 'B-Main' race(s) line up will be determined by the finishing order of the heat race(s).

**B.)** The number of laps and number of transfer position(s) from the B-Main will be based on the overall car count for the event and announced at the driver's meeting. (12 or 15 laps with a 20 minute time limit.)

**C.)** Top five cars that transfer from the 'B-Main' must report to the technical inspection area immediately following the completion of the race to scale the car for the minimum weight requirement. In the event that a competitor fails to report to the scale area following the completion of the event, the driver will be immediately disqualified from that race.

**D.)** The lineup(s) for multiple day events will be determined once it has been determined how many cars have returned for the second day of competition and announced at the driver's meeting.

### **5.8 Backup Cars**

**A.)** A backup car may be introduced at any time between qualifying and the start of the A-feature, with permission from the Steel Block Bandits Late Model Series Director. Any such change will result in the driver starting at the rear of the race in which the driver has qualified for. If a driver changes cars after practice, that driver will remain in his drawn position for time trial qualifying. If a backup car is introduced, the car must pass pre-race technical inspection prior to any competition. Once a car has been withdrawn from an event, that car may not be allowed to be resubmitted to competition during that event. Once the green flag has been displayed for that event cars may not be changed.

### **5.9 Starts**

**A.)** All cars and drivers must be on the starting grid for driver introductions.

If the driver is not present, that driver's starting position will be forfeited and that driver will start from the tail of the field. If more than one (1) driver is late, the drivers will start at the tail of the feature in the order of their qualified position.

**B.)** The race will begin immediately once the racing surface is clear and the cars are properly aligned in their assigned starting positions.

**C.)** Any driver, team, and/or car, who purposely attempts to hold up the start of any race will be placed at the rear of the lineup and could be disqualified from the event, suspended and/or fined.

**D.)** Once the allotted time allowed for being on the track, ready to race, has expired, any late car will be penalized to the rear of the starting field. Any car that starts after the field has started assembling must start at the rear of the field. This rule may be adjusted from time-to-time, at the discretion of the Steel Block Bandits Late Model Series Director.

**E.)** All double-file starts will take place at a consistent speed, with cars side-by-side in rows of two throughout the field. The outside row of starters must maintain the same consistent speed and position of the inside row. Consistent speed will be at the discretion of Steel Block Bandits Late Model Series Officials. The initial start will take place in turn 4, and is initiated by the Flagman.

**F.)** After two attempts, the race is not properly started by the two (2) front row cars, the responsible car(s) will be moved to the second row. Failure to acknowledge and comply with the "move back" signal will result in instant disqualification from the racing event.

**G.)** The field may accelerate when the green flag is displayed . Any passing before the green flag is displayed will not be permitted.

**H.)** Alternate starters for any race will not be permitted to start any race after the original start has taken place.

**I.)** If only one (1) car is involved in a caution on the original start or before one (1) lap is completed, the car that brought out the caution will lineup at the rear of the field and the race will be restarted for the remainder of the field. If all cars, except for the caution car complete a lap on the original start there will be one lap complete. If more than one (1) car is involved in a caution on the original start or before one (1) complete lap is scored the cars involved in the caution will receive their original starting positions for a subsequent attempt at starting the race.

**J.)** One (1) complete lap must be completed before the race is restarted using a restart lineup.

### **5.10 - Restarts**

**A.)** All restarts will be single-file after the completion of the first lap of competition in any race. In all restarts lead lap cars will move to the front with lap down cars moving to the tail end of the field.

**B.)** All restarts will take place with the lead lap cars moved to the front of the

field. Lapped cars will have a choice to pull to the inside and fall in behind the last car on the lead lap in their order of running, or to remain in their current location on the track with the leaders.

- C.) The restart area will be in turn four.
- D.) All restarts will take place at a consistent speed. Consistent speed will be at the discretion of Steel Block Bandits Late Model Series Officials.
- E.) Racing may begin once the green flag is displayed.
- F.) If the leader is unable to properly restart the race after the two (2) attempts, the leader will be penalized two (2) positions.
- G.) When an infraction occurs on a restart, Steel Block Bandit Officials shall exercise their discretion and allow the race to continue, not calling for another restart, and then penalize the offending car(s) under yellow flag conditions or at the conclusion of the race. The offending car(s) will be penalized 2 positions plus any positions gained
- H.) Any cars that stop, either on the racing surface and/or in the pit/designated work area, during a caution period will be required to restart from the rear of the field.(unless directed otherwise by a SBB Official)
- I.) Any cars that are involved in a red flag situation will be required to restart at the rear of the field, including cars that go to the pits during a red flag situation.
- I.) Any car that stops because of a fully blocked track, at the discretion of the Steel Block Bandit Late Model Series Officials, will not be considered involved in the red or yellow flag.
- K.) Any car that is black flagged for consultation during a caution period will retain its position only if the Steel Block Bandits Late Model Series Officials deem the car 'clear' and permit it to return directly to competition without adjustment.

### **5.11 Racing**

- A.) Any car that does not race on the designated racing surface in order to better its position will be black flagged and penalized at the discretion of the Steel Block Bandits Late Model Series Officials.
- B.) Prior to the start of the feature race, on-track, outside the car introductions may be scheduled. In the event of inclement weather and/or other schedules the Steel Block Bandits Late Model Series director may change this.
- C.) A pace car may be utilized to pace the field prior to the start of the event and on all restarts. Passing of the pace car, unless otherwise instructed to do so by the Steel Block Bandits Late Model Series race director will not be permitted.
- D.) **The maximum number of event laps will be stated by the Steel Block Bandits Late Model Series Race Director during the driver's meeting, but may change due to extenuating circumstances.**
- E.) Any car that spins, is involved in an incident and/or has a problem, but

does not bring out the yellow flag and/or create a caution period, will blend back into the field where the driver is able to do so. If there is a caution period the Steel Block Bandits Late Model Series Officials will determine the placement of the car(s) involved. The placement of the car will be where the car blended back into the field.

**F.)** At the discretion of the Steel Block Bandits Late Model Series Official any car that is involved in two (2) single car spins that are unaided may be disqualified from the event. If the car spins unaided for third time it will result in automatic disqualification from the event.

**G.)** At the discretion of the Steel Block Bandits Late Model Series Official any car that intentionally brings out a caution period will be disqualified from the event.

**H.)** If a race is red flagged due to weather conditions and cars are sent to the pits, then any and all work, including tire changes, is permitted.

**I.)** Cars that pit during the course of a race for service and/or repair may reenter the race under green flag conditions once released and instructed to do so by the Steel Block Bandits Late Model Series Officials.

**J.)** Hand signals, colored gloves and pit boards will be permitted during the use of communication with drivers. Flashlights and/or two-way radio communication with drivers will not be permitted. Airport Light Wands will be permitted.

### **5.12 Flag Rules/Officials Signals**

#### **A.) Green Flag;**

- a.) When the starter displays the green flag, the track is open for racing.
- b.) The green flag signifies the start of any race and/or time trial run.
- c.) Passing will not be permitted before the green flag is displayed.

#### **B.) Yellow Flag;**

- a.) When the yellow flag is displayed and/or the yellow caution lights are illuminated, this signifies a caution period.
- b.) When the yellow flag is displayed and/or caution lights illuminated passing will not be permitted unless instructed to do so by the Steel Block Bandits Series Director.
- c.) During any caution period two (2) courtesy laps will be awarded in any race for the purpose of changing tires. The courtesy laps will begin once the car has reached the pit area/designated work area. The car must leave the track under its own power. (pushing or towing the car into the pits cancels the 2 courtesy laps) The car must enter its pit area prior to the "one to go" signal is given by the Flagman. The car will rejoin the field at the tail once the work/service has been completed.

#### **C.) Red Flag;**

- a.) When the red flag is displayed all cars on the racing surface and in the pit areas must come to a complete stop in a controlled manner, while not stopping and/or driving through the area of the incident.
- b.) At the discretion of the Steel Block Bandits Late Model Series Officials a work area may be designated on the racing surface. All cars will be moved to the designated work area on the racing surface before work begins.
- c.) In the event that a red flag is displayed and it is determined by the Steel Block Bandit Officials that it is an 'open-red-flag', work will be permitted. Tire changes

will not be permitted during 'open red-flag' conditions. In the event that a competitor changes a tire during an 'open-red-flag' that competitor will restart from the rear of the field on the ensuing restart. Crew members may not begin to work during an 'open-red-flag' situation until informed to do so the Steel Block Bandit Officials.

d.) If Steel Block Bandits Officials determine that it is a 'closed-red-flag' situation, then no work of any kind and/or type may be permitted during the red flag period.

e.) During any red flag situation all drivers, unless involved in the incident, must remain in their car unless otherwise instructed by Steel Block Bandits Late Model Series Officials.

f.) If any car enters and/or moves during a red flag period, including entering the pit and/or designated work area, the car will be penalized a minimum of one (1) lap and will restart the race at the rear of the field.

g.) If the race is red flagged due to inclement weather conditions, work and tire changes will be permitted.

#### **D.) Black Flag;**

a.) If the black flag is displayed, then the driver that the flag is being displayed toward must bring their car to the designated pit, work area immediately for consultation. The car will not be scored from the point that the black flag has been displayed.

b.) In the event that the black flag is displayed toward a car during a caution period and the car is cleared by the Steel Block Bandit officials, the car may return to its position in the running order of the race as instructed to do so by the officials.

#### **E.) White Flag;**

a.) When the white flag is displayed this signifies that the leader of the race and/or the car that is qualifying has started the last lap of that event.

#### **F.) Checkered Flag;**

a.) The checkered flag signifies the completion of the event. All cars must pass underneath the checkered flag to be scored correctly on the final lap of the event.

b.) Any race and/or qualifying attempt is not completed until the checkered flag is displayed.

#### **G.) Officials Signals;**

a.) All drivers must obey signals, communications, blackboard(s) and/or any other Official's communications that assist in the direction and facilitation of creating proper lineups and/or the process of completing the event.

### **6.0 Scoring Procedures**

**A.)** All races are scored at the designated start/finish line.

**B.)** The original starting lineup will be posted by Steel Block Bandits Late Model Series Officials after the completion of all qualifying events.

**C.)** The restart lineups will be derived from the official scorer's lap and line scored sheets.

**D.)** After the first completed green flag lap, when the caution is displayed all cars that were scored under green flag conditions will hold that scored position with all other cars lining up according to their last completed green flag scored lap. This partial lap will count toward the event's total number of laps.

**F.)** If two or more cars complete the same number of laps, they will be scored and paid in the sequence in which they completed those laps.

**G.)** In the event that caution and/or red flag is displayed with the checkered flag simultaneously that race is completed. The cars not able to cross the finish line will be scored according to their position in their last completed green flag lap.

**H.)** In the event of inclement weather and/or unforeseen circumstances, a race may be called complete short of its entire distance, once it has reached half of the scheduled distance. The race at that point will be scored by the restart lineup.

**I.)** In the event of unforeseen circumstances, the specified laps of any race may change from the original posted number of laps.

**J.)** **When Applicable** - All cars are required to be equipped with a transponder securely mounted on car. The location of the transponder will be determined and announced **prior to each event**. It is the competitors responsibility to ensure proper installation and working condition of the transponder.

## **7.0 Payoff and Pit Procedures**

**A.)** All paid purses and/or other awards and/or funds as outlined in the track promoter's contract shall be paid to the driver and/or designated representative.

## **8.0 Provisional's**

**A.)** If provisional's are permitted in the Feature event; the car(s) will earn full Steel Block Bandit points.

**B.)** Provisional positions awarded in the first two races of the 2012 Steel Block Bandits Series Season will be based off the 2011 final championship point standings..)

**C.)** The driver who are the highest placed in the Steel Block Bandits Late Model Series Championship standings upon entering the event and not qualifying for the feature event through normal qualifying procedures, including time trials, the qualifying races and any other qualifying races including 'B', 'C', 'D', etc...-mains, will receive the available provisional starting position. If there is a tie in the Steel Block Bandits Late Model Series Championship standings upon entering the event, then the tie will be broken by the results of the last featured race finishing position.

**D.)** All Teams wanting to take a provisional must have attempted to compete in at least one preliminary event leading up to the Feature. (Time Trials, Heats or B-Mains)

**E.)** Any provisional starters will fall in line at the rear of the Feature. In most cases this will be 24<sup>th</sup> starting positions. The track promoter has the right to start more than 24 cars. Therefore the provisional starters will be pushed to the rear as needed.

**F.)** Only one Steel Block Bandits Late Model Series Championship Point Standing provisional position will be permitted for each Event's Feature.

**G.)** The promoter may install a program identically paid and pointed as the Steel Block Bandits Late Model Series provisional starting positions for up to 2 drivers.

**H.)** Drivers may only take two consecutive provisionals.

**I.)** Provisional starting positions may not be awarded, at the discretion of the Series Director, for the following, but not limited to; if a car is deemed not able to run a competitive speed; if a car is late to present itself for the feature event.

**J.)** Drivers taking a provisional in a different car must notify the series officials before coming onto the track for the A-main. This car must be inspected before racing.

### **9.0 Racing Programs Special Event Shows**

**A.)** There may be special event shows during the year that do not follow the standard Steel Block Bandits Late Model Series racing formats. When such events occur all teams will be informed of specific program and/or procedural changes for that particular event. All racing programs are subject to change and any such changes will be explained at the driver's meeting.

**B.)** All cars entered in a Steel Block Bandits Late Model Series sanctioned event must have the Steel Block Bandits Late Model decals and contingency program decals displayed in a visible area on the drivers side of the car.

**C.)** From time-to-time mandatory autograph sessions will be scheduled. Drivers will be notified of attendance and location at selected events.

### **10.0 Points Breakdown**

#### **A-Main Feature Distribution:**

|         |         |
|---------|---------|
| 1. 150  | 15. 120 |
| 2. 146  | 16. 118 |
| 3. 144  | 17. 116 |
| 4. 142  | 18. 114 |
| 5. 140  | 19. 112 |
| 6. 138  | 20. 110 |
| 7. 136  | 21. 108 |
| 8. 134  | 22. 106 |
| 9. 132  | 23. 104 |
| 10. 130 | 24. 102 |
| 11. 128 |         |
| 12. 126 |         |
| 13. 124 |         |
| 14. 122 |         |

*\*Points will continue to be broken down by (2) two's if more than 24 cars start the A-main. This will be noted in the drivers meeting.*

#### **Heat Race Point Distribution:**

|       |      |
|-------|------|
| 1. 12 | 4. 6 |
| 2. 10 | 5. 4 |
| 3. 8  | 6. 2 |

**A.)** Heat and/or A-main drivers must take the initial green within their heat and/or A-main to receive heat and/or A-main points.

**B.) Non-Qualifier Point Distribution:** Any driver or any Non-Qualifier that doesn't transfer to the A Feature will receive 85 points. Non-qualifiers must take the initial green for one of the following: Time Trials, Heats and/or B-mains.

**C.) Tough-Luck Point Distribution:** Any Driver that pays registration on race day, but does not take the green flag for his qualifying event, and is unable to participate in on track activities will receive 75 points.

**D.)** In the event of a tie that occurs during the season, the driver that placed highest in the most recent completed event will be listed ahead in the overall Championship Point Standings.

**E.)** In the event that a tie should occur in the final Championship Point Standings at the end of the season, the tie will be broken using the following tiebreakers in order; Most feature wins, Most second place finishes in the features, Most third place finishes in the features, etc..., until the tie is broken. In the event that the tie remains unbroken by finishes the tiebreaker will result to qualifying results from time trials in the same manner. We will also use this method for provisional's during the regular season.

## **11.0 Penalties, Fine Schedules and Protests**

**A.)** The Steel Block Bandits Late Model Series conducts itself as the top Late Model Racing Series in North America and expects its competitors to conduct themselves in a professional manner at all times during any event and/or when representing the series. The team owners and drivers are solely responsible for the conduct of their drivers and/or team members and/ or anyone connected to or affiliated with that owner's team. All fines that are listed in sub-section 11.1 are in regard to the initial penalty. Multiple infractions of the same type will increase the severity of the penalty.

### **11.1 Penalties and Fine Schedules**

**A.)** All fines may be collected from prize money on the day of the infraction. If the competitor has not won appropriate money, the fine must be paid in full before the car and/or driver participates in another Steel Block Bandits Late Model Series sanctioned event.

**B.)** Any team member that attempts to and/or does physically abuse any event official, including pushing, punching, touching, grabbing and/or grabbing the official's equipment, etc., will be subject to disqualification and/or fine and/or suspension and/or legal action and/or any other action deemed appropriate by Steel Block Bandits Officials. Maximum = \$5,000.

**C.)** Any team member that verbally abuses any event official will be subject to disqualification and/or fine and/or suspension and/or legal action and/or any other action deemed appropriate by Steel Block Bandits Officials. Maximum = \$500

**D.)** Any team member that attempts to push their racecar off from the wrong area

and/or does not stop in the designated area as to cause undue confusion and/or delay will be subject to fine and/or suspension and/or any other action deemed appropriate by Steel Block Bandits Officials. Maximum = \$500

**E.)** Any team member who fails to stop for and/or allow post-race inspection will be subject to disqualification and/or fine and/or suspension and/or any other action deemed appropriate by Steel Block Bandits Officials. Maximum = \$500.

**F.)** Any team member that attempts to and/or passes the pace vehicle (unless instructed to do so) will be subject to disqualification and/or fine and/or suspension and/or any other action deemed appropriate by the Steel Block Bandit Officials. Maximum = \$100.

**G.)** Any team member that attempts to drive roughly and/or bumps another competitor unnecessarily will be subject to disqualification and/or fine and/or suspension and/or any other action deemed appropriate by Steel Block Bandits Officials. Maximum = \$5,000.

**H.)** Any team member that attempts to use illegal fuel will be subject to disqualification and/or fine and/or suspension and/or loss of points and/or any other action deemed appropriate by Steel Block Bandits Officials. Maximum = \$5,000.

**I.)** Any team member that attempts to and/or uses an illegal motor will be subject to disqualification and/or fine and/or suspension and/or loss of points and/or any other action deemed appropriate by Steel Block Bandits Officials. Maximum = \$5,000.

**J.)** Any team member that fails to stop for a red flag or drives through the incident area will be subject to disqualification and/or fine and/or suspension and/or loss of points and/or any other action deemed appropriate by the Steel Block Bandit Officials. Maximum = \$500.

**K.)** Any team member that goes into another competitors pit area or to another competitors car and becomes involved in any type of altercation will be subject to disqualification and/or fine and/or suspension and/or loss of points and/or any other action deemed appropriate by Steel Block Bandits Officials. Maximum = \$5,000.

**L.)** Any team member that attempts and/or is found to be using tires that are found to be illegal in any manner will be subject to disqualification and/or fine and/or suspension and/or loss of points and/or any other action deemed appropriate by Steel Block Bandits Officials. The minimum penalty will be as follows; disqualification from the event, a fine of 500 championship points, loss of all earned purse and/or award money from the event, a fine equal to and/or more than the purse money rewarded for the event and/or a minimum suspension up to six (6) months in duration.

**M.)** Any team member involved in an altercation that results in physical contact will be subject to disqualification and/or fine and/or suspension and/or loss of points and/or any other action deemed appropriate by Steel Block Bandits Officials. Maximum = \$5,000.

**N.)** Any team member who drives a racecar in an area that is closed to racecar traffic or drives through the pit area at excessive speed with either a racecar, scooter or 4-wheeler will be subject to disqualification and/or fine and/or suspension and/or loss of

points and/or any other action deemed appropriate by Steel Block Bandits Officials. Maximum = \$500.

**O.)** Any team member who goes out onto the racing surface without permission under a controlled period will be subject to disqualification and/or fine and/or suspension and/or loss of points and/or any other action deemed appropriate by Steel Block Bandits Officials. Maximum = \$500.

**P.)** Any team member who ignores a flag or official signal will be subject to disqualification and/or fine and/or suspension and/or loss of points and/or any other action deemed appropriate by Steel Block Bandits Officials. Maximum = \$500.

**Q.)** Any team member who is found to be in violation of the substance abuse policy at any event will be subject to disqualification and/or fine and/or suspension and/or loss of points and/or any other action deemed appropriate by Steel Block Bandits Officials. Maximum = \$10,000.

**R.)** Any team member who drives or causes to be driven; a race car, pit mule, 4-wheeler, personal vehicle or transporter in a dangerous and aggressive manner in the restricted area will be subject to Team disqualification and/or fine and/or suspension and/or loss of points and/or any other action deemed appropriate by Steel Block Bandits official. Maximum = \$500.

### **11.2 Protests**

**A.)** All protests must be turned into the Steel Block Bandits Series Late Model Series Director within five (5) minutes of the posting of the official finish.

**B.)** The protest fee must be paid at the time of the protest.

**C.)** Only the driver and/or the designated team representative of the car owner may turn in an official protest.

**D.)** Any refusal of inspection and/or non-compliance during an official protest will result in the disqualification of the protested car and the prescribed penalties.

**E.)** If the car protested is found legal, the protesting fees will be released to the protested team less the protest filing fee.

**F.)** If the car protested is found to be illegal, the protesting fees will be returned to the team filing the protest less the filing fee.

**G.)** Any altercation relating to the incident with Officials and/or any other racing participants by the team filing the protest will nullify the objection.

**H.)** ALL PROTESTING Filing FEES are \$500

**I.)** The Steel Block Bandits Late Model Series Officials reserve the right to ask for a legality test at any time (sealed motor and/or otherwise). If through testing procedures a car is found to be illegal, responsibility for proving otherwise is solely with the team that was checked. There will be no exchange of money for tests asked for by officials when a formal protest is not turned in.

J.) The Steel Block Bandits Late Model Series Officials reserve the right to accept or deny any protest based on their sole discretion. 'Grudge' protests and/or any protest that are 'not in the spirit of good standing' will be denied.

## **12.0 Steel Block Bandits Late Model Rules**

ANY CAR, TEAM AND/OR DRIVER THAT DOES NOT MEET THE SPECIFICATIONS AND/OR EQUIPMENT REQUIREMENTS WILL BE SUBJECT TO PENALTIES AS DETERMINED BY THE STEEL BLOCK BANDIT LATE MODEL SERIES OFFICIALS.

### **12.1 Engines**

A.) Only conventional STEEL BLOCK type V-8 engines with the cam in the block will be permitted. "**358 Cubic Inch Rule**" - Max cubic inch allowed is 358cu inches + 1.8% (given for engine building/refreshing tolerances)

- **NOTE: For tracks that allow larger than 358cu (+1.8%) engines, the Bandits will allow the cars with larger cubic inch engines, to race using the TRACK RULES for that event.**
  - for example, the cars that have engines larger than 358cu(+1.8%), must run that Speedway's Rules for that event only.
- **This will apply to each track that we visit that allows larger cubic inch motors. Larger cubic inch motors must run the tracks rules for that event only.**
- **All competitors entered in an event, that run a 358, must use the BANDIT's 358 engine rule for those events. The Track rules only apply to larger cubic inch motors.**

B.) All engines must be based on a manufactured, factory design.

C.) Aluminum or steel heads will be permitted. (Please see Weight and Carb Rules)

D.) All engines must be normally aspirated with a single conventional-type four (4) barrel carburetor

E.) The engine must have an operating self-starting mechanism. Vehicles that require a 'push start' will not be permitted.

F.) Only a single distributor or magneto will be permitted. Coil pack and/or engines that have individual ignition systems, electronic or mechanical for each cylinder will not be permitted.

G.) A maximum of 25 ½"-inches from the center of the ball joint to the front of the motor plate/engine bell housing flange will be permitted.

H.) Only two (2) valves and one (1) spark plug will be permitted per cylinder.

I.) In the event that there are new engine components and/or a new engine configuration they must be submitted per the 115 Promotions, LLC submission requests prior to being introduced into competition.

### **12.2 - Carburetors**

A.) NO WEBER OR PREDATOR CARBURETORS

B.) GM 602/604 Crate Motors

1. Single open four (4) barrel carburetor
- D.) 358 Cubic Inch (+1.8%) or less with Steel Heads**
1. Single open four (4) barrel carburetor
- C.) 358 Cubic Inch (+1.8%) or less with Aluminum Heads**
1. Single open four (4) barrel carburetor
  2. YOU MUST run 50lbs of weight on or in front of the mid-plate - See rule 12.10

### **12.3 - Transmission/Driveline and Driveline Components**

- A.)** No direct drives or in-out systems permitted.
- B.)** The transmission must be bolted to the engine it must have forward and working reverse gear(s) and must be able to shift to forward or reverse with engine running.
- C.)** All cars must be equipped with a working self-starter.
- D.)** Aluminum or steel transmission permitted. (Bert or Brinn allowed).

### **12.4 – Driveshaft**

- A.)** The driveshaft must be a minimum of 2"-inches in diameter. All drive shafts must be painted white.
- B.)** Only one (1) drive shaft connected from the transmission to the center section of the rear end will be permitted.
- C.)** A minimum of one (1) driveshaft hoop / sling must be fastened securely to the frame. It is recommended that two (2) driveshaft hoops / slings be used.

### **12.5 – Rear End**

- A.)** Any type of rear end differential / center section will be permitted.
- B.)** Live-axle type rear ends will not be permitted.
- C.)** Independent rear suspensions will not be permitted.
- D.)** Floater-type wide-five hub assemblies will be the only hub assemblies permitted.

### **12.6 - Fuel, Fuel Cells and Fuel System**

- A.)** All cars must have fuel cells that meet and/or exceed FT3 specifications. The fuel cell may have a maximum capacity up to 35 gallons.
- B.)** The fuel cell must be enclosed completely in a container that is a minimum thickness of 20-gauge magnetic steel and/or .060"-inch aluminum.
- C.)** The entire container must be visible for ease of inspection.

- D.)** The fuel cell must be mounted behind the rear axle between the rear tires, a minimum of 4"-inches ahead of the rear bumper. The bottom of the fuel cell must not be any lower than the bottom of the rear end/quick change housing.
- E.)** The fuel cell must be mounted with a minimum of two (2) .125"-inch thick steel straps. The straps must cover the entire cell. Fuel cells that are mounted in a square tubing frame will be permitted.
- F.)** The fuel pick up must be positioned on the top or right side of the fuel cell and be constructed of steel or aluminum. The fuel pick up must have a check valve.
- G.)** Only racing gasoline or alcohol will be permitted for competition.
- H.)** Only mechanical and/or belt driven fuel pumps will be permitted. Fuel injection system(s) and/or electrical fuel pumps and/or any type of pressurized fuel system will not be permitted.

### **12.7 - Exhaust - Muffler and Sound Reduction Devices**

- A.)** The exhaust flow must be parallel to the ground. Exhaust systems that direct the flow toward the ground will not be permitted.
- B.)** All exhaust systems/headers must end with a collector.
- C.)** Several tracks have a locally enforced decibel rule, which preempt any particular muffler rule. Some tracks may have a maximum sound level rule of 95 decibels at 100 feet. This rule will be enforced by local government agencies.

### **12.8 - Traction Control Devices**

- A.)** All electronic and/or computerized wheel spin and/or ignition retardation and/or acceleration limiting and/or traction control devices of any type will not be permitted.
- B.)** Adjustable ping control devices, dial a chip controls, timing controls and/or automated throttle controls will not be permitted.
- C.)** Adjustable restrictor plates will not be permitted.
- D.)** Remote control components of any-type will not be permitted.
- E.)** Radios and/or devices for transmitting voice and/or data will not be permitted.
- F.)** Data acquisition systems will not be permitted.

### **12.9 - Chassis/Frame**

- A.)** The wheel base minimum will be 103"-inches with a maximum wheel base of 105"-inches.

- B.)** Frames fabricated from magnetic steel with a minimum of 2"-inches x 2"-inches or approved rectangular magnetic steel with a minimum material thickness of .083"-inches.
- C.)** A minimum of 1.75" Outside Diameter magnetic steel tubing, 4130 Chrome Moly or DOM with a minimum material thickness of .083"-inches, will be permitted for frames that are fabricated from round tubing.
- D.)** Rear bumpers that are stubbed may only extend a maximum of 8"-inches beyond the frame. Any stubbed rear bumper that extends further than the maximum of 8"-inches must be formed and directed 8"-inches toward the front of the car.
- E.)** External rub rails will not be permitted.
- F.)** All cars must be equipped with a tow hook and/or strap for the purpose of towing.
- G.)** All battery supports and/or mounts must be secure and braced in two (2) horizontal positions and one (1) vertical position.
- H.)** Any frame built on or after January 1st, 2006, must have the builder's unique serial number plate prominently attached to the left side roll cage upright. The plate must be welded in place. All characters on the plate must be a minimum of 1/2"-inch in height and the serial number must not exceed 8 characters.
- I.)** No titanium chassis or suspension components.

## **12.10 - Weight**

- A.)** The total weight of the car with the driver at the end of each time trial, heat, B-Mains and A-Main will be:
- 1.) A minimum of 2,250 lbs as weighed on the track scales for a car with a 604 or 602 GM Crate Motor
  - 2.) A minimum of 2,350 lbs as weighed on the track scales for a car with a 358 cubic inch (+1.8%) or less
    - a.) *(Aluminum Heads – YOU MUST run 50lb's of weight on or in front of the mid-plate. However, your overall weight is 2,350..)*
  - 3.) *The weight on or in front of the mid-plate will be weighed within the pre race inspections and tagged/marked. Post race inspections may require this weight to be weighed again.*
- \* The mounting system that is used to secure the added weight in Rule/s 12.10.A.2.a & 12.10.A.3.a & 12.2.H & I to the car will only be considered part of the weight if it is a standalone mount and weight unit.
- B.)** Cars must be weighed at the end of each event without adding additional components. Example – Fuel, oil, water, body panels, etc...

- C.) Weights up to 50 lbs must be positively fastened by 2 ½-inch, minimum grade 5 bolts with a minimum of two (2) weight clamps. Threaded rods will not be permitted. All weights must be painted white and clearly labeled with the car number on it.
- D.) Any weight(s) must be securely attached to the frame below the body decking.
- E.) Any car that loses any weight/ballast during an event may be subject to a penalty.
- F.) Weights attached to the rear bumper and/or outside the frame will not be permitted.
- G.) Pellet-type and/or liquid-type weight/ballast will not be permitted.
- H.) Driver operated weight adjustment, 'weight jacking' devices will not be permitted.

### **12.11 - Body (Refer to diagrams attached) - "LUCAS OIL" BODY RULES**

#### **12.12 – Overall Appearance**

- A.) The car must be neat in appearance and must display the car number on the front nose and the rear fuel cell. The minimum height for the number will be 6"-inches.
- B.) The car must have legible numbers on each side and on the roof a minimum of 18"-inches high,
- C.) It is recommended that the driver's last name be placed in legible letters on both doors or the rocker panels.

#### **12.13 - General Body**

- A.) The nosepiece must match the body style of the make and manufacturer of the car and be the same as the make and manufacturer of the motor (GM, Ford, Mopar).
- B.) All cars must have a minimum half-inch (1/2") and a maximum of one (1) -inch radius at the top of fenders, doors and quarter panels. Sharp edge(s) will not be permitted.
- C.) The floor boards and firewall must completely cover the driver's area with no openings.
- D.) Fins and/or lips of any-type will not be permitted anywhere along the entire length of the car.
- E.) The body line must be a smooth even line from front to rear.
- F.) Wedge shape cars and/or body styles will not be permitted.

**G.)** “Belly pans” or any type of enclosure on the bottom of the car will not be permitted. A skid plate to protect the oil pan is permitted. A maximum 1/8” skid plate will be permitted.

**H.)** Wings and/or tunnels and/or any type of air deflection device will not be permitted underneath the body and/or chassis of the car.

**I.)** A maximum of one (1) stone deflector, for rear mounted oil pumps, oil filters, and for the main oil tank will be permitted. The deflector may be made of steel, aluminum, or heavy gauge wire. The cover may only be mounted near the unit it is designed to protect with a maximum size of 18” x18” and only mounted from the upper right frame rail to the lower right frame rail.

**J.)** Panels of any type under the rear deck running from the front to the rear of the car will not be permitted.

**K.)** Bodies that are non-approved will be assessed a weight penalty. The minimum weight penalty will be as follows; 25 lbs per inch of the infraction.

**L.)** Any style air cleaner scoop used must be positioned in front of/or around the air cleaner and must not exceed 1”-inch in height above any part of the air cleaner. Any type of flange and/or air deflection device and/or fin that is designed to direct airflow will not be permitted.

**M.)** Cockpit adjustable components with the exception of brake bias adjusters will not be permitted. Adjusters of any-type, including but not limited to adjustable shocks, hydraulic or pneumatic weight jacks, trackers, ignition boxes or similar adjustable components will not be permitted inside the cockpit of the car or within reach of the seated driver.

**N.)** All body panels must be solid. No holes, slots or air gaps are permitted.

**O.)** All non-approved bodies or any section/s of the body can or will be assessed a one hundred pound (100#) maximum weight penalty at the discretion of the Technical Director or Series Promoter.

#### **12.14 – Nosepiece**

**A.)** Only approved nosepieces may be used.

**B.)** All nosepieces must be made of molded type material.

**C.)** Two piece noses must be positively fastened together in the center. Spacers added to gain width will not be permitted.

**D.)** The nosepiece must be mounted in a manner that does not alter its original shape.

**E.)** The nose shall remain flat above the nose lip/wicker bill. Alterations and/or additions may not be made to this area other than cooling holes will be permitted.

**F.)** The nosepiece can extend a maximum of fifty-two inches (52”) from the center of the front hub to the farthest point extending forward.

**G.)** The nosepiece must display a headlight decal package. A one-race grace period, running contrasting color tape in the shape of a headlight will be permitted.

**H.)** Front fender flairs can extend a maximum of three inches (3") above the fender tops and hood.

**I.)** Front fender flairs can extend a maximum of four inches (4") above where the filler panel meets the hood.

### **12.15 - Roof**

**A.)** The roof length from front-to-back must be a minimum of 44"-inches with a maximum of 54" inches.

**B.)** The roof width from side-to-side must be a minimum of 48"-inches to a maximum of 52"-inches.

**C.)** The roof must be stock appearing and be mounted level to the body.

**D.)** The minimum height of the roof will be 45"-inches with a maximum height of 48"-inches. The roof will have a maximum rake of 3"-inches.

**E.)** The roof must be mounted parallel to the body and near the center of the car as viewed from the front of the car. The entire rear edge of the roof, when measured from the bottom of the roof to the top of the interior decking, shall maintain the same height measurement across the entire width of the roof.

**F.)** A maximum 1-1/2" roll, turned downward will be permitted along the front edge of the roof. A maximum 1"-inch roll, turned downward, will be permitted along the rear edge of the roof. These modifications will be permitted to improve the strength of the roof. Any other modifications to the roof will not be permitted.

**G.)** Flat and/or odd shaped roofs will not be permitted. Bellied and hollowed roofs will not be permitted. 4.3.8. Any sun/antiglare shields may not exceed a 4" drop from the top roof line, and must hinge for easy exiting.

**H.)** A maximum of four (4) roof edge bead rolls of a maximum height of 1/2"- inch the length of the roof will be permitted.

**I.)** The roof posts and spoiler support(s) may not overlap.

**J.)** Only single plated roofs will be permitted.

**K.)** The maximum thickness of the roof at any point will be 1/2"-inch.

**L.)** The roll cage and associated frame members above the interior panels (decking) must remain open. Enclosures will not be permitted.

### **12.16 - Roof Supports and Window Side Panels**

**A.)** All roof side panels must extend to the edge of the body.

**B.)** The roof side panel window size must be a minimum of 10"-inches x 15"-inches. A maximum crown of two (2) inches will be permitted, measured from the center of a common tangent point on either side of the crown.

**C.)** The side window area may be covered with clear Lexan and/or equivalent type material, be cut out and/or represented by a decal. Both roof support openings must be covered and/or both must be left open. The left and right side openings must be the same size with a tolerance of six (6) inch.

**D.)** A maximum bow of two 2"-inches outward on the window side panels as viewed from behind will be permitted.

**E.)** The front roof supports up to 2"-inches in width must extend forward to the rear of the hood. Lips and/or fins will not be permitted.

**F.)** All cars must have a minimum of three inches (3") and maximum of four inches (4") between the sail panel and spoiler side where they meet the deck.

### **12.17 - Front Fenders, Fender Flares and Hood**

**A.)** The hood and the front fenders must be level and flat from the left to the right side of the car.

**B.)** The outside edges of the hood and/or the fender must remain inside the overall bodyline.

**C.)** The front fender may be a maximum of 37"-inches in height, measured vertically from the ground to the top of the fender behind the front tires.

**D.)** The front fender flares must be made of plastic and must not alter the original shape of the nose piece.

**E.)** The front fender flares must not extend beyond the front tires more than 1"-inch per side to a maximum width, edge-to-edge, of 90"-inches in width with the wheels pointed straight.

**F.)** The front fender flares can have a maximum increase in height of 2 inches.

**G.)** The front fender flares must have collapsible supports.

### **12.18 - Doors**

**A.)** The door-to-door measurement must not exceed 76"-inches in width at the top of the doors.

**B.)** The door-to-door measurement must not exceed 82"-inches overall width when measured at the bottom of the doors in the center of the car.

**C.)** The doors must not exceed 37"-inches in height when measured from the ground to the top of the door.

**D.)** The door sides may not break inward from the top 76"-inches and bottom 82"-inch measurements. Hollow and/or belled doors will not be permitted.

E.) The minimum ground clearance will be 3"-inches.

### **12.19 - Quarter Panels**

A.) No offset quarter panels permitted. Must be equally tapered towards the center of the car.

B.) Tire clearance from body must be a minimum of two inches (2"). No wheel skirts permitted.

C.) At no point can quarter panel sides break in towards center of the car.

D.) Right side quarter panel must be straight in line with the door or taper in a maximum of one inch (1').

E.) Left rear quarter panels must extend downward from the deck a minimum of thirty-three inches (33") and a maximum of thirty-six inches (36") including the plastic. Measured at the front and rear of the quarter panel. Right rear quarter panels must extend downward from the deck a minimum of twentyseven inches (27") without the plastic and thirty-one inches (31") with plastic. Measured at the front and rear of the quarter panel. One inch (1") tolerance.

### **12.20 - Spoilers and Spoiler Braces/Supports**

A.) Only aluminum and/or Lexan and/or Lexan-type rear spoilers will be permitted.

B.) The maximum overall height of the rear spoiler will be 8"-inches. The maximum width of the rear spoiler, including braces and/or supports is 72"-inches. *(602/604 GM Crate Motors may run up to a 12" – inch spoiler)*

C.) The rear spoiler must begin at the deck and extend 8"-inches from that point. Suspending the spoiler to create a wing-type device will not be permitted.

D.) The rear spoiler must begin at the rear most point of the quarter panels.

E.) Only three spoiler braces/supports will be permitted. The front edge of the spoiler brace/support must be in line with the spoiler.

F.) The outside spoiler supports must not be mounted any wider than the top of the quarter panel(s) and must be centered on the rear deck.

G.) In the event that aluminum angle is used to brace the upper edge of the spoiler, the angle must not add to the height and/or length of the spoiler in any way.

### **12.21 - Interior**

A.) The interior of the cockpit must be a minimum of 11"-inches below the top of the roof and/or roll cage, measured perpendicular to the ground from the bottom of the roof to the cockpit deck. Roof rolls are not part of the measurement.

B.) The side window opening(s) must be 15"-inches from the top of the door to the bottom of the roof.

**C.)** Support bars that block the right window from the driver exiting the cockpit will not be permitted.

**D.)** A single rock guard (Lexan screen) tapered back from the steering wheel to the height of 1"-inch in line with the driver's chest providing the 11"-inch minimum clearance is met at any point from the roll cage to the body and/ or rock guard.

**F.)** If the interior deck drops the drop must begin at the rear of the engine plate with a maximum of 4"-inches and must not drop below 4"-inches rear of the hood. The start of the dropped interior must remain closed as a part of the fire wall. The entire width must be closed off with sheet metal.

**G.)** Interior must be fastened flush at the top of the door and quarter panels and must taper gradually towards the center of the car not creating a "lip effect".

### **12.22 - Driver Compartment**

**A.)** A full metal firewall fabricated from magnetic steel and/or aluminum must encompass the driver's compartment from front-to-rear, on both sides and floor boards.

**B.)** The driver's seat must be a high back aluminum/carbonfiber seat, designed specifically for racing, located on the left side of the car and mounted per the manufacturer's instructions securely to the frame.

**C.)** The seat design should be one from a current manufacturer and/or recommended to include the full containment design. Installation of the full containment seat should follow the manufacturer's instructions.

**D.)** All cars must be equipped with a quick-release type steering wheel. The 360 degree splined type quick-release steering wheels are highly recommended.

**E.)** The drivers compartment must have a starting switch and/or button within reach of the driver.

**F.)** A clearly labeled electrical on/off 'kill' switch must be within reach of the driver is recommended.

**G.)** Mirrors of any-type will not be permitted.

**H.)** Radios and/or electronic and/or data communication devices will not be permitted.

**I.)** Any edge and/or sheet metal end in and around the drivers compartment must be protected with trim and/or beading and rounded. Sharp and protruding edges will not be permitted.

**J.)** A substantial rock guard is recommended with a minimum of three (3) additional roll bars must be mounted in front of the driver. The rock guard must be made from wire screen. Windshield screens must be a minimum of .090-inches and must be securely fastened.

**K.)** A fully charged fire extinguisher meeting SFI 167.1 specifications with an activation push and/or pull knob within reach of the driver is recommended

### **12.23 - Suspension**

A.) All cars must be equipped with an operating four wheel disc brake system.

### **12.24 - Shock Absorbers**

A.) All shock absorbers must be constructed of magnetic steel and/or aluminum.

B.) Remote reservoirs will be permitted.

### **12.25 - Suspension Components/Springs**

A.) Coil springs must be magnetic steel.

B.) Leaf springs may be composite material or magnetic steel.

### **12.26 - Roll Cage**

A.) All cars must have a roll cage fabricated from a minimum of 1-1/2" outside diameter with .065"-inch thick seamless magnetic steel tubing.

B.) The side roll bars and/or door bars must extend into the door panels.

C.) A minimum of three (3) bars must be utilized on the left side of the car in the door area.

D.) Any of the bars that are utilized for the top portion of the roll cage, including, but not limited to the front and rear hoops, the top hoop and the uprights, must extend a minimum of 1"-inch above the driver's helmet.

E.) All new frames and/or roll cages built on or after January 1st, 2006 an additional vertical side brace is required on the left side in vertical alignment with the steering wheel.

### **12.27 - Wheels**

A.) Only steel or aluminum wheels will be permitted for competition.

B.) The wheels must be mounted to the hubs utilizing lug nuts. "Knock off" and/or single type wheel mounting systems will not be permitted.

C.) The maximum wheel width that will be permitted is 14"-inches.

D.) The maximum front track width will be 90"-inches and the maximum rear track width will be 88"-inches, measured from the outside edge of the tire to the outside edge of the tire.

E.) Wheel spacers will be permitted provided the track width(s) do not exceed their maximum dimensions.

### **12.28 Tires**

A.) For the 2012 Steel Block Bandits Late Model racing season:

1. Hoosier – 1300 or harder

2. American Racer – 44 or harder
3. Minimum durometer reading of 32 at anytime

**B.)** The maximum size for any tire in competition is 11"-inches x 29"-inches x 15"-inches, unless otherwise specified in written form to all competitors.

**C.)** The maximum outside circumference of the tire will be 93"-inches, unless otherwise specified in written form to all competitors.

**D.)** The maximum width of the tires measured from the outside edge(s) of the sidewalls across the face of the tire will be 16 <sup>3</sup>/<sub>4</sub>"-inches. There will be a tire hoop used for inspection and the tire must pass through the tire hoop freely, without any manipulation or outside contact.

**E.)** The tire rule for any event may be amended in written form, to all competitors per any technical bulletin.

**F.)** Tire changes will not be permitted once a car has been presented to the starting grid/lineup area for any race. Any cars making a tire change will forfeit their assigned starting position for that particular race and start from the rear of the field.

**G.)** Chemical alteration of the tread carcass and/or tread compound, such as tire 'soaking' and/or the introduction of tread 'softener' and/or physical defacement (removal, altering and/or covering) of tire sidewall markings in any manner will not be permitted.

**H.)** Chemical alterations, vulcanizing, tire softening, defacing and/or altering the face of the tire lettering and/or tire stamping will not be permitted. Chemicals or tire softening is not permitted at any time. Tires may be inspected at any time. Any violation with any tire presented for competition may result in immediate disqualification from the events and/or other penalties including but not limited to; loss of money, fine, loss of points and/or suspension. Grooving is allowed.

**I.)** The Steel Block Bandit Series will allow competitors to put tape over the numbers. However, the series officials must be able to remove the tape and read the numbers on the outer side of the tire at any given time.

### **12.27 - Post race inspection**

**A.)** The winner and a random car finishing in the top 5 of the A-main will be pumped after each event. - **The series reserves the right to pump any motor at anytime during a Steel Block Bandits event.** (Maximum cubic inches that is allowed to pump is 358 +1.8%) (1.8% is given for engine building/refreshing tolerances)

**B.)** After completion of the A-main, and the two cars to be pumped have passed tech and victory lane is complete. A SBB official will go to your pit and determine which cylinder they wish to pump. It is then the team's responsibility to provide the proper tools and equipment to remove required parts. If refusal to pump or required parts cannot be removed for any reason, the car and driver will be disqualified and receive no points or money for that event.

**C.)** If results from pumping any engine are not In compliance, SBB will give the team an option of pulling a head and measuring the bore and stroke of the engine in question. If failure to comply, the said car and driver will be disqualified from the event and receive no money or points for that event.

**D.)** Any car finishing in the top 5 of the A-main that require 50 lbs in front of or on the mid-plate, may be required to remove after the completion of the A-main for weighing.

(SBB will **NOT** be responsible for any damage or materials required to perform any inspection.

Team/driver will be responsible for the removal of any parts required by a SBB official.)

### **13.0 Rule Interpretations and Additions**

**A.)** Sportsmanship – Under caution driver “A” uses his/her car to spin out driver ”B”. Ruling – If deemed intentional by the series officials, driver “A” will be disqualified from that heat race, b-mains or a-main. If this happens within the A-main event, no points and no money will be awarded to driver “A”.

**B.)** Sportsmanship – Driver “A” is within the pit area and uses his/her car as a weapon and hits driver “B’s” car. Ruling – If deemed intentional by the series officials, driver “A” will be disqualified for that night’s event, no points, no money will be awarded, loss of points and placed on probation for the remainder of the season.

**C.)** Sportsmanship – Team “A” engages into a fight during the time frame driver “A” is on the track racing. Ruling – The Steel Block Bandit Late Model Series views racing as a team sport. Therefore, the actions taken against team “A” will also affect driver “A”.

**D.)** Working on your car – Driver “A” stops on the track and team “A” works on drivers “A’s” car as it sits on the track. Ruling – Driver “A” will be disqualified from that heat race, b-mains or a-main. If this happens within the A-main event, no points and no money will be awarded to driver “A”.

**E.)** Points Protest – Once the updated points have been posted, the driver that is protesting will only have three (3) days from the posted points date, to protest the previous week’s points. After the third (3<sup>rd</sup>) day a non-refundable protest fee of \$500.00 will be assessed to review all points. The overall points can only be protested back to a maximum of 30 calendar days.

**F.)** Tires – During pre-race inspection Driver “A” is found to have illegal tires on his/her car. Ruling – Because no qualifying has taken place, Driver “A” has done nothing wrong.

**G.)** Two Day Events with a single Feature – Only drivers that have competed on day (1) one will be allowed to compete on day (2) two.

**H.)** One Day Events – Drivers that arrive late may compete in the heats and/or B-mains. If the A-main does not have a full field, the late arriving driver may tag onto the rear of the A-main. All cars must pass inspection before taking to the track.

**I.)** Media – Any race team that uses a public forum (web sites, message boards, TV, radio, etc.) to threaten, “Bash” and/or display negative publicity to or

**about the Steel Block Bandit Series, the series drivers, the series sponsors and the series tracks will be subject to (at the discretion of the Series Promoter) a season disqualification and/or fines of \$1000 and/or an indefinite suspension and/or loss of points.**

**J.)**     One-way Radios – One-way radios are mandatory for all Steel Block Bandits events.

**K.)**     Added Weight - All lead must be solid blocks. No lead shot permitted. All lead **MUST BE** painted white with car number on it. This is a safety issue! All lead must be securely fastened with minimum of grade 5 bolts minimum of 3/8 inch. All bolts must be doubled nutted or safety wired. Locking nut alone is not legal. All “single bolt mount” clamps must have duct tape or pinned at bolt to keep lead from backing off. 25 lbs per bolt mount. One bolt mount 25 pounds, two bolt mount 50 pounds. No one piece over 50lbs.

#### **14.0 Rainouts**

**A.)**     Once the initial green has been dropped for the Steel Block Bandits A-main, the field is locked.

**B.)**     In the event that the initial green for the Steel Block Bandits A-main event has not been dropped, the event will be scratched and rescheduled for a later date.

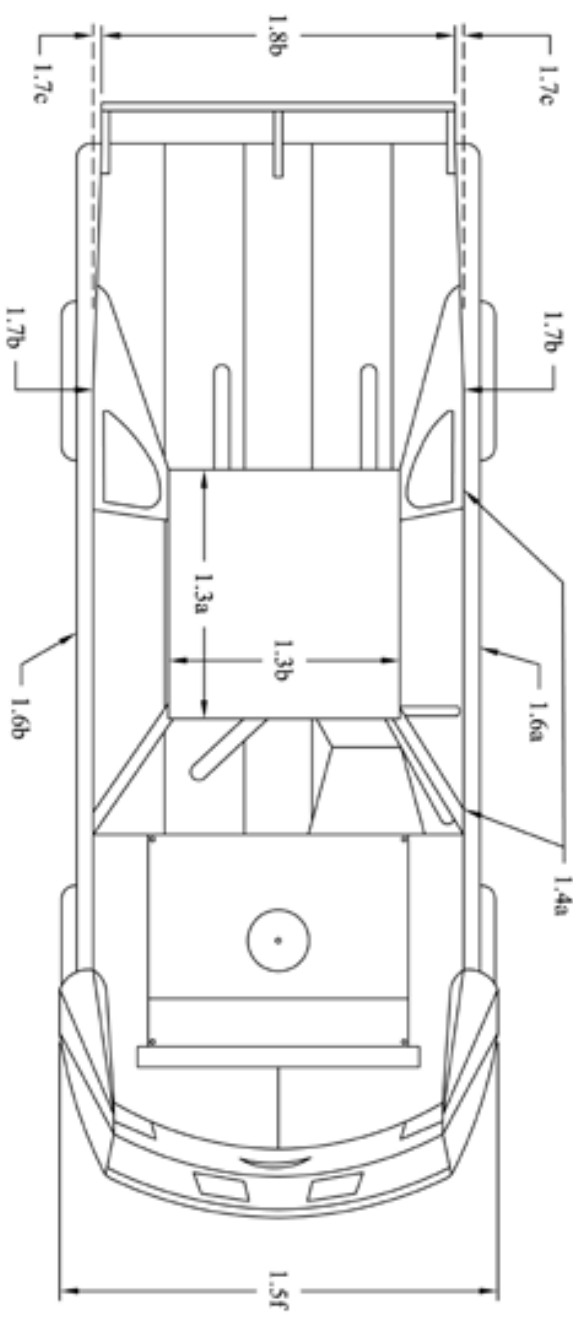
#### **Exceptions**

- 1) The track promoter has the option to hold the field in its current qualifying positions if he/she can complete the event within the next two days. We would pick up the event at the point we stopped.

**NOTE:** ANYTHING NOT COVERED IN THESE RULES WILL BE UP TO THE DISCRETION OF THE SERIES OFFICIALS WITHOUT RECOURSE FROM DRIVERS OR OWNERS. ALL OF THE PRECEDING RULES ARE SUBJECT TO REVISION. THE OFFICIAL IN CHARGE RESERVES THE RIGHT TO MAKE DECISIONS AND JUDGE ACCORDINGLY. TRACK OFFICIALS HAVE THE RIGHT TO REFUSE ANY CAR OR DRIVER THAT DOES NOT MEET SPECIFICATIONS.

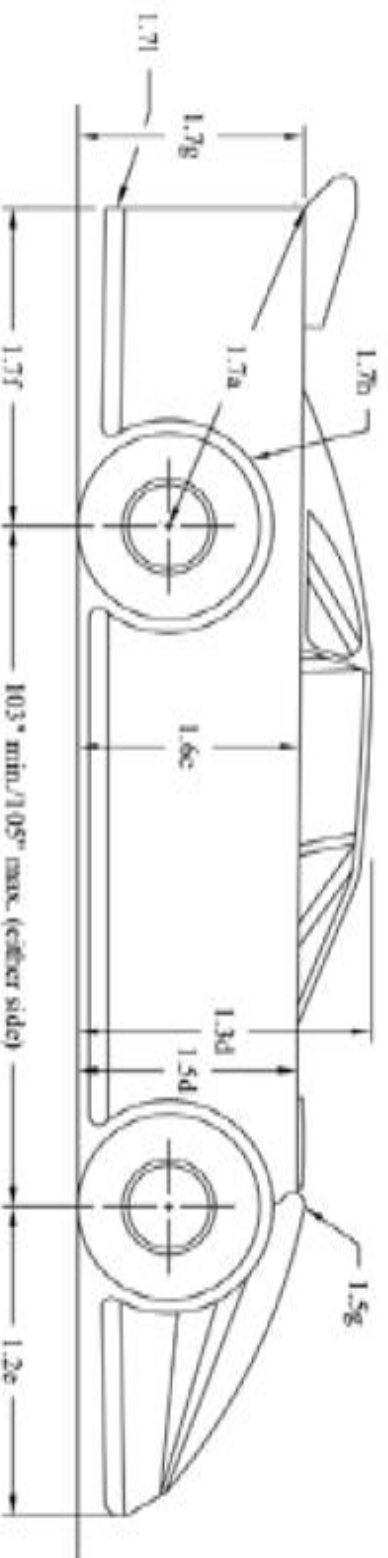
## **15.0 Drawings**

- 1.3a - Roof length must be a minimum of forty-four inches (44") to a maximum of fifty-four inches (54").
- 1.3b - Roof width must be a minimum of forty-eight inches (48") to a maximum of fifty-two inches (52").
- 1.4a - All roof side panels must extend to edge of decking.
- 1.5f - Front fender flares cannot extend beyond front tire more than one inch (1") in width with the wheels pointed straight.
- 1.6a - Door cannot exceed seventy-six inches (76") in it's entirety at top of door.
- 1.6b - Door cannot exceed eighty-two inches (82") in width at the bottom in the center of car.
- 1.7b - The quarter panels cannot exceed seventy-six inches (76") in width at any point behind the center of the rear hub as measured at the top.
- 1.7c - Rear decks must taper from seventy-six inches (76"), as measured at the top over the rear hubs, uniformly back to seventy-two inches (72)" at the spoiler, equally on both sides.
- 1.8b - Maximum spoiler width is seventy-two inches (72").

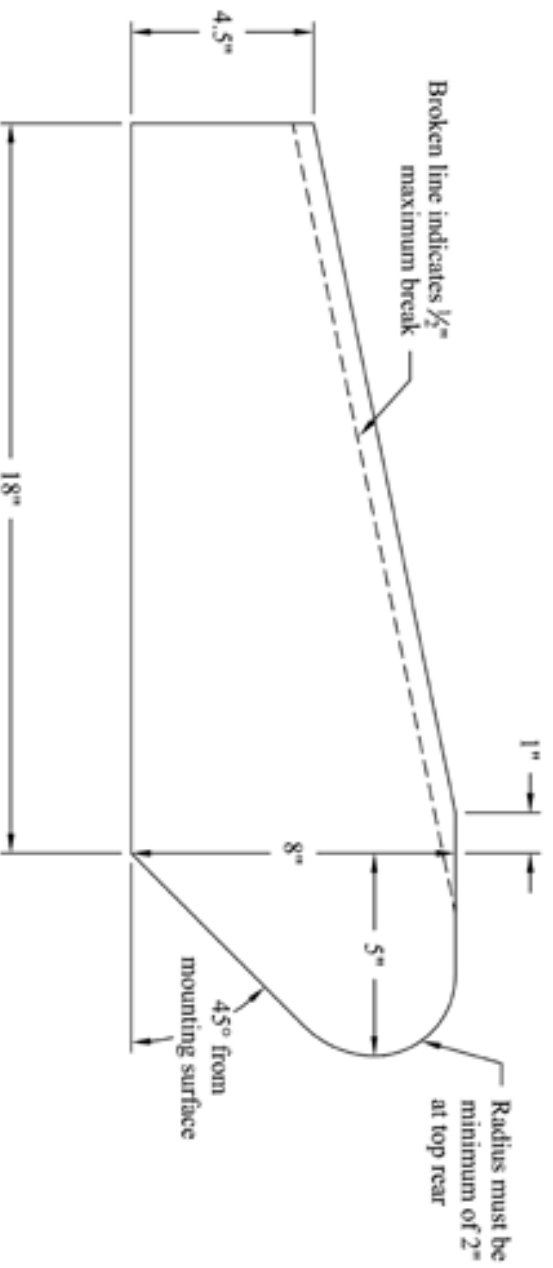


**LATE MODEL  
TOP VIEW DIMENSIONS**

- 1.2e - Stock Nosepiece can extend a maximum of fifty-two inches (52") from center of front hub to farthest point extending forward.
- 1.3d - Roof height must be between forty-five (45") and forty-eight inches (48") from the ground.
- 1.5d - Front fenders can not exceed thirty-seven inches (37") in height measured from the ground.
- 1.5g - The front fender flares may not be higher than fenders by more than two inches (2").
- 1.6c - Doors can not exceed thirty-seven inches (37") in height measured from the ground.
- 1.7a - Fifty-three inches (53") maximum center of rear hub to top corner of quarter panel.
- 1.7f - Forty-eight inches (48") maximum length from center of rear hub to end of quarter panel.
- 1.7g - Thirty-eight inches (38") maximum height from top of deck to ground.
- 1.7h - Minimum of two inches (2") tire clearance from body.
- 1.7i - Any skirting can not extend beyond the quarter panel.



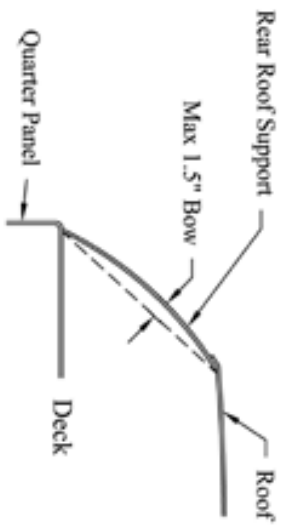
## LATE MODEL SIDE VIEW DIMENSIONS



*No more than three (3) spoiler supports permitted. Front edge of supports must be in line.*

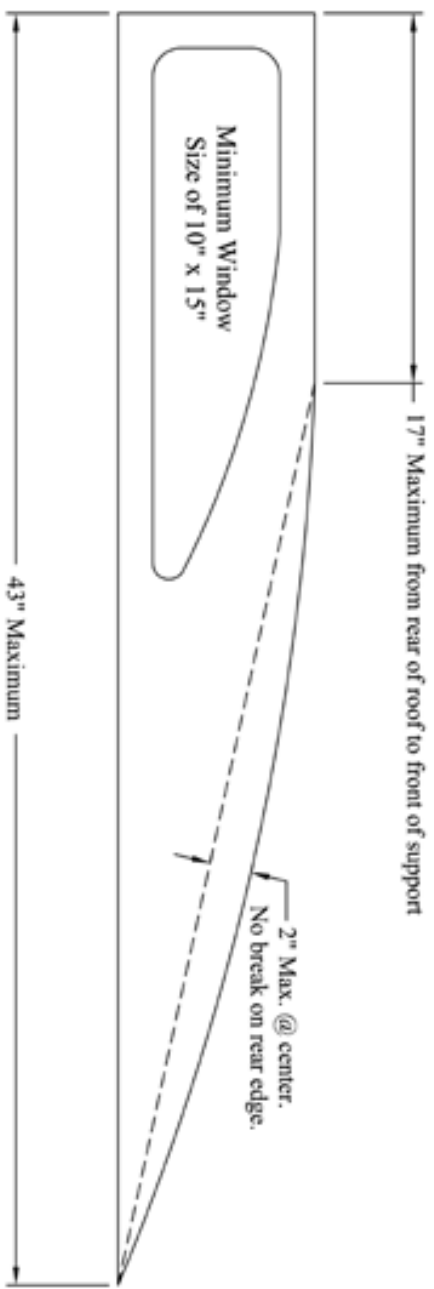
***Dimensions Have Zero Tolerance***

**DIRT LATE MODEL  
SPOILER SUPPORTS**



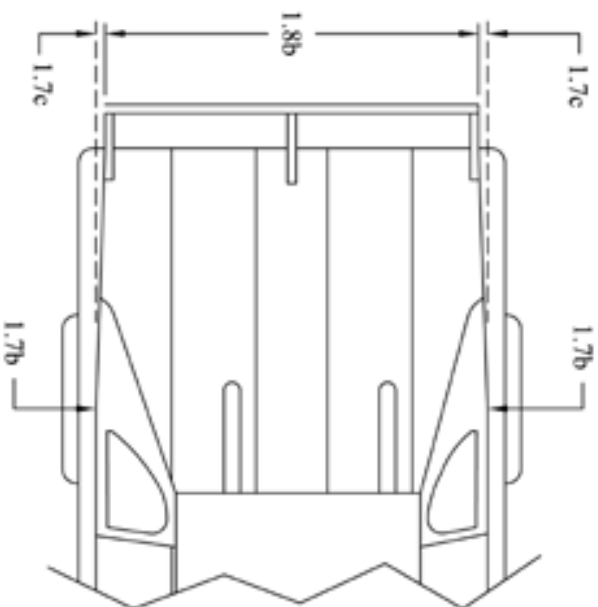
**REAR VIEW**

17" Maximum from rear of roof to front of support



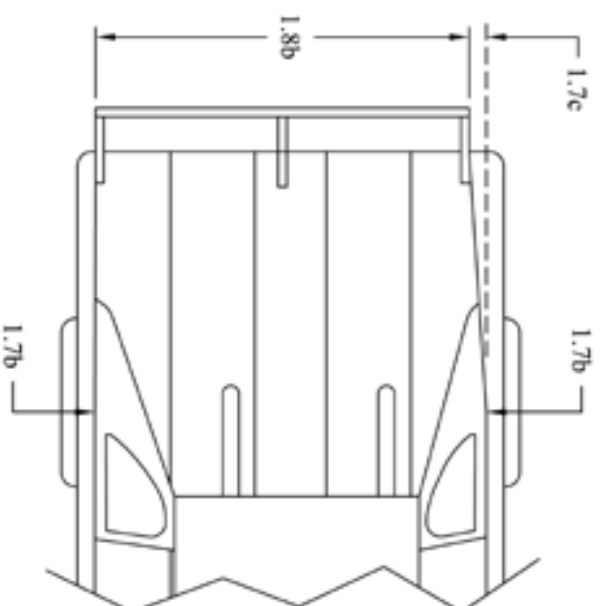
**SIDE VIEW**

**DIRT LATE MODEL  
WINDOW SIDE PANEL  
& REAR ROOF SUPPORT**



Option 1

Rear decks must taper from seventy-six inches (76"), as measured at the top over the rear hubs, uniformly back to seventy-two inches (72)" at the spoiler, equally on both sides.

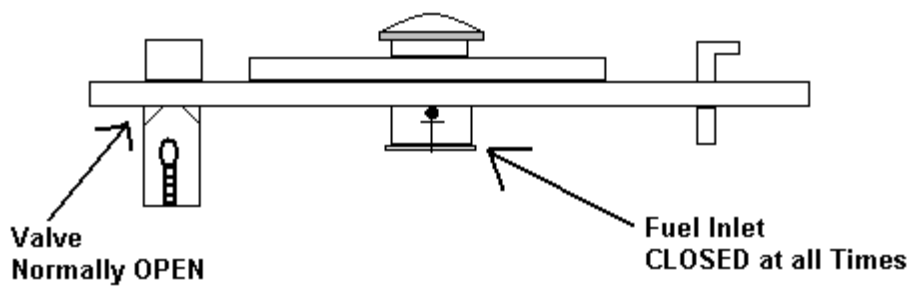
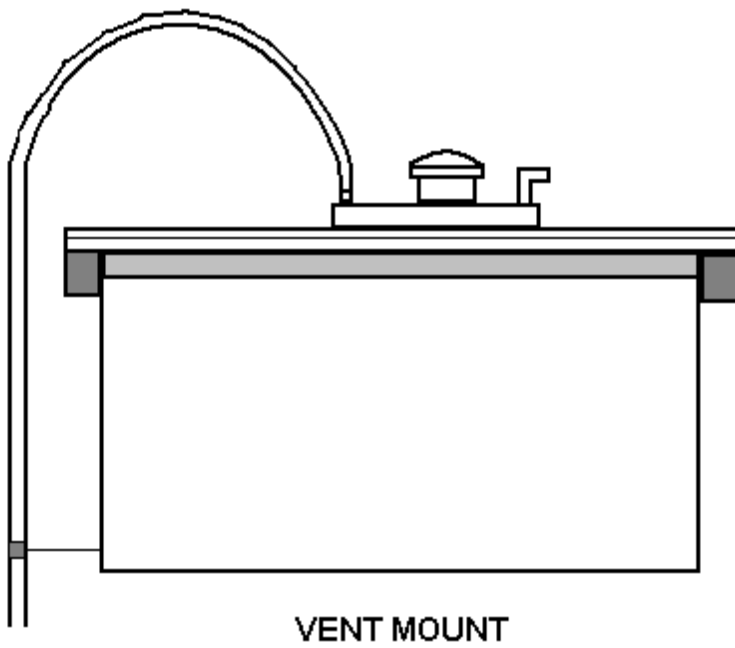
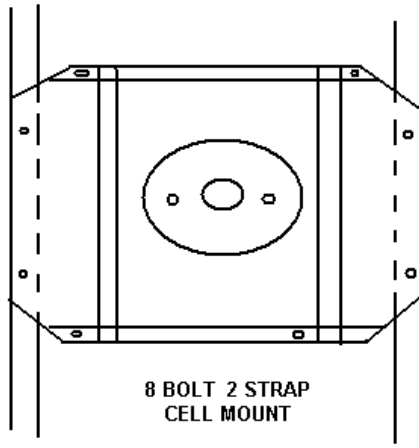


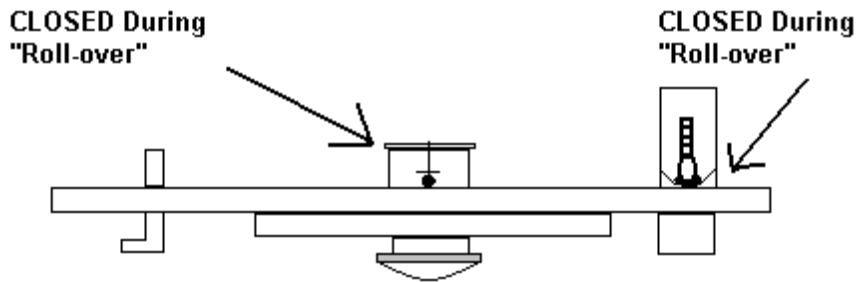
Option 2

Rear decks must taper from seventy-six inches (76"), as measured at the top over the rear hubs, uniformly back to seventy-two inches (72)" at the spoiler, on the left side only.

## LATE MODEL REAR QUARTER PANEL OPTIONS

**LATE MODEL FUEL CELL & VALVE SPECS**

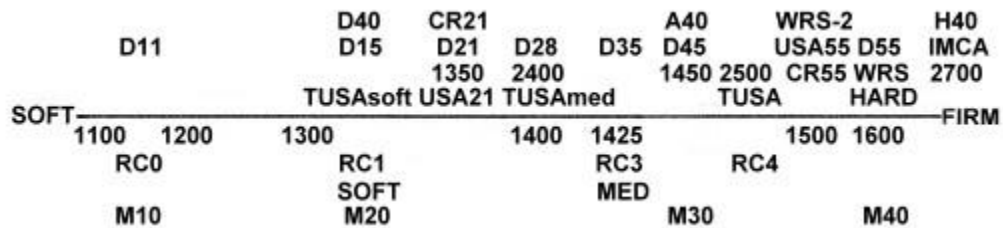




## 16.0 Tire Chart

### Hoosier Tire Chart

*You must run a 1300 or harder*



### American Racer

*You must run a SD44 or harder*

TYPE "L" EC-0 EC-1 EC-2 EC-3  
 TYPE "A" D-10 D-20 D-30 D-40  
 TYPE "F" SOFT MED HARD

SD-23 SD-28 SD-33 SD-35 SD-38 SD-44 SD-48 MD-50 MD-53 MD-56 MD-57 HD-65 HD-70